



LAKEVIEWS

The Newsletter of the Lake George Land Conservancy • fall/winter 2005



2005

H I G H L I G H T S

Conservancy Protects Historic Property Adjoining Rogers Rock

The Lake George Land Conservancy was gifted a donation of a 62-acre property with nearly 300 feet of shoreline in the Town of Ticonderoga by Thomas Adams and Judith Lavin and their families. The property is adjacent to the 41-acre Rogers Rock property previously donated to the LGLC by the Adams and Lavins, and subsequently transferred to New York State in 2003. The parcel includes the Little Slide, named so, we believe, due to its proximity to the larger Rogers Slide, the 500 vertical foot rock wall that makes up the east face of Rogers Rock. Little Slide consists primarily of contiguous forest land. In addition, the property contains an old graphite mine and important wildlife habitat

“The Lavin and Adams families have a great love for Lake George,” said Adams, and a strong desire to see its shoreline and environs preserved. Judith Lavin and I decided that 2004 would be an appropriate year in which to give the Conservancy the tract adjoining Rogers Slide. This constitutes all the property the two families jointly own in Essex County and gives the State and the Conservancy the bulk of the mountain known as Rogers Rock. Our families hope this second donation will, like the first, encourage gifts to the Conservancy of other shoreline and adjacent property in the great north basin of Lake George.”



continued on pg 2

Thanks to the support of our many members, the Lake George Land Conservancy has *permanently protected* more than 10,000 acres of land in the Lake George watershed and more than 45,000 feet of undeveloped shoreline.



Henry M. Rowan
Conservation Award
pg 4

Defining the Science
of Stewardship
pg 6-7

New Board
Member Profiles
pg 6-7

Donor
Recognition
pg 8-11

BOARD OF DIRECTORS

David Darrin, *President*

Harvey W. Schadler, *Vice President*

Sandra Nierzwicki-Bauer, Ph.D., *Treasurer*

Robert C. Singer, *Secretary*

Timothy L. Barnett

Henry Caldwell

Dean L. Cook, DMD

Jack Havas

John Hubbard, Jr.

John J. Macionis, Ph.D.

Peter Menzies

Joyce L. Rice

Hugh Roberts

Claire K. Schmitt

Daniel A. Spitzer, Esq.

Advisory Board

Mark Johnson, Ph.D.

Judith K. Larter

Amy Marsh Macionis

Donald Rice

Joan H. Ryder

Kathryn E. Slaughter

Virginia Rowan Smith

Staff

Lynn L. Schumann, *Executive Director*

Vacant, Director of Land Protection

Christian J. Krahling, *Conservation Assistant*

Diane Potter, *Finance and Office Manager*

Sarah M. Small, *Program Assistant*

Glenn Sousa, *Technology and Information Systems Support*

The mission of the Lake George Land Conservancy (LGLC) is to preserve the world-renowned water quality of Lake George and the rare plants and animals within the lake's 150,000-acre watershed by permanently protecting natural lands.

Founded in 1988, the LGLC uses progressive conservation strategies to work with landowners, government officials, and supporters aimed at securing the protection of special natural places for future generations to enjoy. The organization is governed by a 17-member volunteer Board of Directors.

To date, more than 1,300 concerned individuals, who live, work and vacation here, have helped the LGLC and its partners protect more than 45,000 feet of shoreline and 10,500 acres of land around Lake George. The LGLC, a not-for-profit, tax-exempt organization, relies on the support of generous individuals, corporations, and foundations. Donations of cash or securities are tax-deductible to the full extent of the law and deeply appreciated.

Lake George Land Conservancy
P.O. Box 1250 Lake Shore Drive
Bolton Landing, NY 12814
(518) 644-9673; fax (518) 644-9675

Printed on recycled paper 

2005 HIGHLIGHTS

continued from pg. 1

Gift of Waterfront Property in Hague

The Hague Adirondack Charitable Foundation has donated a 1.9-acre parcel with approximately 315 feet of shoreline to the Conservancy. Located at the intersection of Rt. 9N and Rt. 8 in the Town of Hague, the land was bought by the Foundation in the mid-1980's. The purchase ultimately protected the land from potential waterfront development, and the property now provides a scenic lawn and gardens to the residents of Hague.

"The Darrin Family and the Hague Foundation have always had a great love for Lake George and the surrounding region," explained Margaret Darrin, Trustee of the Foundation. "We recognize and support the important mission of the Lake George Land Conservancy in preserving the beauty and quality of the Lake and the surrounding region for future generations to enjoy. We are excited to be able to contribute this parcel to the Land Conservancy in order to assist them in fulfilling their important mission." The Conservancy plans to create a native species garden on the property to showcase the beauty and easy care of a native garden.

Gift of Conservation Easement on Assembly Point

The Conservancy has been gifted a donation of a conservation easement on an 11.92-acre property in the Town of Queensbury, on Assembly Point. The property owners, James Wallace and Amelie Wallace Porter and family, wished to grant the conservation easement in order to permanently protect the site, which includes road frontage and is suitable for development. The parcel also includes wetlands, forested areas, and a brook that flows to Lake George.

The property was originally purchased as a family summer camp in 1929 by the Wallaces' grandfather, explained James Wallace's wife, Lucy. "John Wallace purchased abutting properties during the 1960's and 1970's," she said. "In particular, he was interested in protecting lands behind the camp from future development in order to preserve the Lake's pristine quality. He often talked of the desire to eventually give some of this 'back land' to a conservation organization to assure its long-term protection."

"While changing lifestyles resulted in John's children selling their summer camp, we are delighted to have been able to realize John's wish to permanently protect these back lands by giving a conservation easement. The staff at the LGLC has been extremely helpful in accomplishing this."



Frog eggs collected by students of St. Mary's School.

The LGLC and the LGA Help Students Support Arbor Day

Students from St. Mary's School in Ticonderoga got their hands dirty while doing a good deed. The students joined Lake George Land Conservancy staff, Sarah Small and Chris Krahling, and Lake George Association (LGA) staff Karin Badey, at the Conservancy's Gull Bay Preserve in Putnam in honor of Arbor Day.

Students planted fifty tree seedlings at the preserve's entrance to help resolve

erosion and drainage problems. The preserve is open year-round to the public, and this stabilization project was an important step in maintaining the health and safety of the property as well as controlling excessive run-off into Lake George. In addition to planting trees, the students were led by LGLC and LGA staff on the preserve's trails to explore its springtime treasures including vernal pools and the great blue heron rookery. With nets and bug boxes in hand, students discovered amphibian egg masses, newts, and a variety of other creatures of the forest.

Conservancy and Up Yonda Farm Partner to Thank Volunteers

The Lake George Land Conservancy and Up Yonda Farm thanked volunteers at an inaugural collaborative event in June 2005, recognizing the important efforts of their loyal volunteers. The volunteer celebration was held at the Up Yonda Farm Environmental Education Center on Route 9N in Bolton Landing.

Staff from both organizations was present to thank current volunteers, and to welcome anyone interested in learning more about the work of the Conservancy and Up Yonda Farm. Guests enjoyed guided walks along beautiful wooded trails, watched and participated in waterbar installation demonstrations, explored Up Yonda's museum and exhibits, and learned about terrestrial invasive species in the watershed and what the Conservancy is doing to eradicate them.



The LGLC is grateful for volunteers, like Ruth Lamb shown here removing invasive plants.

Spring Migration at the Pilot Knob Ridge and Gull Bay Preserves

Audubon Society member and a Commissioner of the Lake George Park Commission, Joan Robertson helped LGLC staff lead Spring Migration Birding Hikes at the Pilot Knob Ridge and Gull Bay Preserves. For the second year in a row, Joan has volunteered to lead bird enthusiasts to spot migrating songbirds. Many bird species were observed including such colorful specimens as the Indigo Bunting, Yellow Warbler, Blue-headed Vireo and Scarlet Tanager. The birding outings are not only wonderful fun, they help Conservancy staff identify bird species visiting the preserves.

A birdwatcher at the great blue heron rookery at the LGLC's Gull Bay Preserve.



TRAIL SPOTLIGHT:

CAT & THOMAS MOUNTAINS PRESERVE-PEAK TO PEAK TRAIL

A summit trail traversing the ridgeline from Cat Mountain to Thomas Mountain was recently designed and mapped. Not for the faint of heart, this backcountry trail will traverse five peaks along the ridgeline and boasts magnificent panoramic views. Stewardship staff carefully constructs trail networks throughout our preserves. Our goal is to invite you onto the land for a valuable outdoor experience while preserving the integrity of the landscape. From time to time you might find a trail closed — often this is to abate any erosion issues, protect a particular species, or conduct restoration work.



SPECIES SPOTLIGHT:

STOPPING BY WOODS ON A SNOWY EVENING

Great-horned and barred owls nest before the winter snows melt. As part of our species-monitoring program, our stewards lead winter treks through the woods, by the light of a full moon, in search of these silent-flying night predators. An essential component to monitoring the health and vitality of our woodlands, the absence of the owl might indicate that other species are not thriving. Members of the LGLC are invited to join us to hoot with the owls. See page twelve for more information.



Award recipients Hannah, Susan, David, and Peggy Darrin at the LGLC's 6th Annual Land & Water Conservation Celebration.



Award presenter Virginia Rowan Smith

Henry M. Rowan

CONSERVATION AWARD

The Lake George Land Conservancy was proud to present the 2005 Henry M. Rowan Conservation Award to the Darrin Family. This special award, given to David M. and Peggy Darrin and their son David, daughter-in-law Susan, and granddaughter Hannah, is given annually to an individual or group who has taken the initiative to support Lake George and the Lake George Land Conservancy (LGLC) through a demonstration of long-term commitment to lake protection, lake stewardship, and our organization.



Mr. and Mrs. Henry M. Rowan

The Darrin Family's first introduction to Lake George was in

1924 when David M. Darrin began his vacations at Caldwell in southern Lake George with his parents. He continued to visit the lake annually, and in July 1948 he married Peggy Voelkner, at The Sagamore in Bolton Landing. Peggy was "mesmerized by this jewel of a lake." In 1963, she and David M. purchased their corner of the world, Loblolly in Hague, and have enjoyed every summer at the lake since. With their strong love and desire for the preservation of Lake George, David M. and other devoted alumnae of the Rensselaer Polytechnic

The venue for the event was The Hyde Collection in Glens Falls during its exquisite special exhibition, *Painting Lake George*, which showcased works depicting Lake George from 1774-1900. The award, presented by Virginia Rowan Smith, was particularly poignant because the talent, creativity and passion demonstrated by the artists through their paintings was an easy comparison to the Darrin Family's talent, creativity and passion toward Lake George.

Institute in Troy, NY, founded the Darrin Freshwater Institute in 1967, with humble beginnings in trailers and Quonset huts on the east shore of Lake George. The Darrin Freshwater Institute, now located in Bolton Landing, was David M. and Peggy's first move toward their stewardship of Lake George, but many acts toward preservation of the lake followed, including their ongoing assistance to the LGLC in its land protection efforts.

David M. and Peggy successfully instilled a strong and enduring stewardship ethic in their son David, who joined the Board of Directors of the Lake George Land Conservancy in 1993 and currently serves as its Chairperson. For many years, David has given time, energy, talent, and true devotion to the Conservancy on a daily basis. He and wife Susan have opened their home time and time again to welcome friends, neighbors and strangers to hear about the work of the Lake George Land Conservancy and garner their support. They have talked about the work of the Conservancy in cars and kayaks, on sailboats and iceboats, at 4th of July picnics and in boardrooms from New York to Chicago. From the smallest gesture of keeping Conservancy brochures on their entrance hall table, to boat trips along the shoreline to view land for sale, to lemonade on porches with potential volunteers, to standing humbly before Henry M. Rowan to garner advice and support for the next vital project on the horizon, David has performed every duty possible in pursuit of the Conservancy's mission. He has helped this small grassroots

organization grow to be an effective leader in land protection on Lake George.

David and Susan's daughter, Hannah, has been ever present in all of these activities. Hannah has taken ownership of the same family commitment to Lake George through her volunteer efforts removing invasive species from LGLC preserves and working on a zebra mussel team with the DFWI. Hannah is directing a portion of her high school education toward environmental issues. We expect she too will play a significant role helping to preserve Lake George well into the future.

“The Darrin Family’s sense of stewardship for the lake is contagious...all have nurtured the family legacy of caring for the lands and waters of Lake George through their children”

–Virginia Rowan Smith

As Peggy Darrin stated so well during her acceptance speech, “The generations of our family who follow me, and my late husband, continue working toward preserving what generations before have enjoyed.”

The Board of the Lake George Land Conservancy is honored to add the Darrin Family as a recipient of the Henry M. Rowan Conservation Award.

We are most grateful to the following individuals and foundations who have made significant contributions and pledges to the LGLC since January 2004:

GIFTS OF FINANCIAL SUPPORT

Thomas T. Adams
 Albert H. Singer Partners
 Henry Bisner and Nancy McKay
 Dean L. Cook, DMD
 David and Susan Darrin
 Douglas and Phyllis Smith Fund
 Charles C. Freihofer
 The Fund for Lake George
 GE Foundation
 Hague Adirondack Charitable Foundation

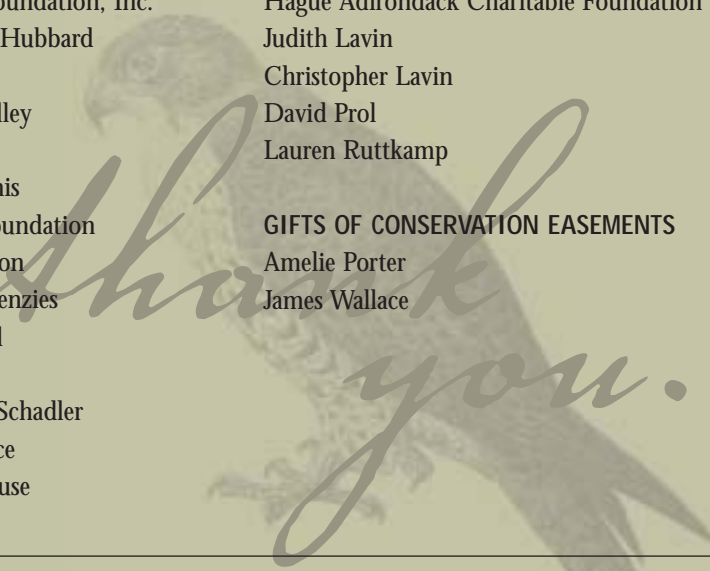
Helen V. Froehlich Foundation
 Henry M. Rowan Family Foundation
 John and Ellen Hubbard
 Jack & Anita Havas Foundation, Inc.
 John C. and Susan K. Hubbard Foundation
 Mr. and Mrs. Ross Kelley
 Judith Lavin
 John and Amy Macionis
 Margaret A. Darrin Foundation
 Charles and Leah Mason
 Peter and Gretchen Menzies
 David and Gladys Prol
 Rice Family Fund
 Harvey and Margaret Schadler
 James and Lucy Wallace
 Lawrence M. Waterhouse

GIFTS OF NATURAL AREAS

Thomas T. Adams
 Charles C. Freihofer
 Hague Adirondack Charitable Foundation
 Judith Lavin
 Christopher Lavin
 David Prol
 Lauren Ruttkamp

GIFTS OF CONSERVATION EASEMENTS

Amelie Porter
 James Wallace



defining the science of

According to Webster's dictionary, stewardship is the process of managing another's affairs or property. For the Lake George Land Conservancy, stewardship is as dynamic as the species and landscapes we attempt to manage. It is not as simple as "managing" property, but as complex as understanding the web of life and what drives it.

The goal of land stewardship for the Lake George Land Conservancy is to sustain the existing natural processes and diversity of species that shape a landscape, or to restore them where they have been removed. Most preserves are too small and fragmented to host all natural processes to which flora and fauna are adapted and under which the species evolved. Therefore, many preserves need active management to maintain their native species, natural communities, and natural ecological processes.

Stewardship on Lake George is a blend of property management, active biological management, ecological monitoring and research.



Big brown bats in Hague mine.

Hague Graphite Mine — Bats Abound

The LGLC staff assisted wildlife biologists and technicians from the New York State Department of Environmental Conservation in conducting a bat count at the graphite mines in Hague. The LGLC maintains a conservation easement

over the mines and the surrounding 250 acres. Every few years, scientists go into the mines to count the bats while they are hibernating. This year, more than 1,200 bats of five different species were counted.

These furry critters are essential to managing the insect population in the Adirondacks. One bat may consume more than 600 insects in one evening. Multiply this by 1,200 bats and the consumption rate reaches approximately 7,200.

PROFILES IN COMMITMENT TO PROTECT LAKE GEORGE

The Lake George Land Conservancy trustees work on a volunteer basis, providing the organization with their skills and countless hours of hard work. The Lake George Land Conservancy is pleased to welcome five new trustees to its Board of Directors:



John J. Macionis, Ph.D., is Professor of Sociology and Prentice Hall Distinguished Scholar at

Kenyon College, in Gambier, Ohio, where he has taught for twenty-six years. He is recognized as the author of the most popular textbooks in his discipline, which are widely used across the United States and around the world. John's family ties to Lake George, dating back 100 years to when his grandfather first visited, have created in him

a deep attachment to the lake and a commitment to do what he can to protect it. John and his wife, Amy, spend several months each year with their children at their home in Hague.



Peter Menzies produces and directs projects for television, as the owner of Leontine Pictures. His

specialty is programming for the music industry. Apart from enjoying the beauty of his hometowns of Bedford, New York

and Bolton Landing, Pete's passion is protecting and preserving the environment around him. He has provided volunteer services to the Westchester Land Trust, The Nature Conservancy of Eastern New York, and the Lake George Association. He has spent most summers since his youth living, working, and playing on Lake George. Now, he and his wife Gretchen have two sons who enjoy fishing and hiking in the area throughout the summer.

Joyce L. Rice resides with her husband, Don, in Silver Bay, New York, and Sanibel, Florida. After a career in banking and commercial real



estate in New York City and New Jersey, Joyce now enjoys being outdoors and has tackled high peaks, the Lake George-Bolton ten-mile run, and fishing on Lake George. Community service has always been important to her, whether feeding the homeless in NYC, coaching Little League, or helping children in the Fresh Air Fund Program. Joyce looks forward to working with the LGLC as a significant opportunity to work with other dedicated people in stewardship for Lake George.

Hugh Roberts is the owner of Roberts Real Estate. He has been in the real estate business since 1970 in the Capital Region and more recently in the Lake George region. His professional career has encompassed brokerage services, development, construc-

STEWARDSHIP

Erosion Control

Often, when the LGLC protects a new piece of land, one of the most pressing property management issues is erosion. Previous mountainside disturbances, often due to timber harvesting or the use of motorized vehicles on the land, have caused significant damage to many parcels, causing the soils to loosen and sending sedimentation downhill



LGLC volunteers Mandy and Rocco Giampaolo and LGLC conservation assistant Chris Krahling install waterbars at our Gull Bay Preserve.

into streams and eventually Lake George. This unnatural sediment flow often creates sandbars along the water's edge and disrupts the natural flow of the lake water. With the help of local volunteers, eight waterbars were installed

along trails at the Thomas Mountain Preserve.

Additionally, six waterbars were installed at our Gull Bay Preserve. Waterbars are created to help divert water and sediment run-off to the side of the trail. There, vegetation can help absorb the flow.

LGLC Hosts Town Meeting

The Lake George Land Conservancy and the Town of Bolton are working together to combat the spread of Japanese knotweed and other prevalent non-native invasive plant species in the region. At a meeting on August 16, 2005, at the Bolton Town Hall, staff from the Lake George Land Conservancy spoke to town and other Lake George residents about the aggressive knotweed and discussed proper removal methods. Key to the program is the cooperation of the Town of Bolton to allow residents to dispose of plant material removed from their property for free, by taking it to the town's transfer station for incineration.

Special thanks to Bolton Town Supervisor Zandy Gabriels who agreed to offer this opportunity for town residents, stressing the importance of education and cooperation to enhance invasive control efforts.

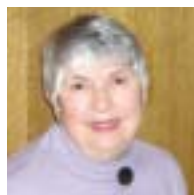


tion, management, and mortgage finance. He has served as a director and officer of a number of

community boards in the Albany area, as well as local and national industry boards. He and his wife Christina reside in Bolton Landing and Albany.

Claire K. Schmitt is the author of four books about the natural areas of Schenectady, Albany, Rensselaer, and Saratoga Counties. Having received a degree in English literature, she worked for five years at Doubleday & Co. in New York City. Claire has specialized in lichens and provided her expertise to lichens and vascular plant surveys on a

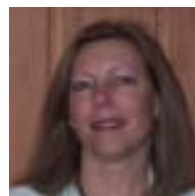
number of Lake George Islands. She has been actively involved on several boards and is a supporting member of many national and local environmental organizations. Since 1961, Claire and her husband, Roland, have owned a camp on Tongue Mountain, which is accessible only by boat.



The Lake George Land Conservancy also welcomes the following individuals to its Advisory Board:

A graduate of Dartmouth College, **Amy Marsh Macionis** worked in the publishing industry both in New York City

and in Columbus, Ohio. Amy is a skilled editor whose efforts are reflected in a number of the best textbooks in various disciplines. In recent years, she has worked exclusively on John Macionis' textbooks. Amy was introduced to Lake George twenty years ago by her husband, John. She quickly developed a sense of obligation to protect the lake so that many generations to come will also know the magic that she and her family have found at Lake George.



Donald Rice served as senior vice-president at the Ingersoll-Rand Company before his retirement from the

firm in 2004. His career included assignments in Human Resources, leadership of the company's

Asia Pacific and Latin American operations, global services and corporate communication and public affairs. Don began his career at General Electric following service in the US Army. He is a graduate of the University of Oregon where he received a BA in Economics and an MS in Industrial and Labor Relations. Don, who resides in Silver Bay, New York, and Sanibel, Florida, with his wife, Joyce, has served on the boards of various non-profits including hospitals, the United Way, and local boy scout organizations.



Matching Gifts Make Donations Twice as Powerful

Your donations to the Lake George Land Conservancy can have an even stronger impact when matched by your employer. Many companies will double and sometimes triple the value of their employee's charitable gifts.

In the past, the Lake George Land Conservancy has received matching gifts from the following companies:

- Aetna Foundation, Inc.
- AutoZone Matching Gift Program
- AXA Foundation
- Chase Manhattan Foundation
- Deutsche Bank Americas Foundation
- FM Global Foundation
- GE Foundation
- Houghton Mifflin Charitable Gift Fund
- JP Morgan Chase Foundation
- Mitsubishi International Corporation
- Pepsico Foundation
- Reader's Digest Foundation
- Texas Instruments Foundation
- United Technologies
- Verizon Foundation
- Wellington Management Company LLP
- Zurich Scudder Investments

If your company participates in a gift-matching program and you do not see it listed here, contact your human resources office for a matching gift registration form and return it to the LGLC with your donation. Even simpler, some companies offer online matching gift registration to their employees and retirees. Please help us add to this list by requesting a matching gift to the Lake George Land Conservancy from your employer today.

For gifts received between October 1, 2003 – September 30, 2005, we gratefully thank the following people for their commitment to conservation:

Individuals

Mr. & Mrs. Robert T. Abbe
 Frank A. Adamo, Jr.
 Thomas T. Adams
 Joseph Albarelli
 Kathe & Rolly Allen
 Mr. & Mrs. Steven Allenby
 Andrew & Karen Amerling
 Mitchel & Elaine Angel
 Anonymous (5)
 Mary Ellen Appleman
 Jane Arnold
 Elizabeth Avery
 Meredith D. Avery
 James B. Ayers
 Karen H. Azer
 Mrs. Carolyn W. Babinsky
 Bob Bailey & Ginger Cannon
 Bailey
 Fran Balch
 David B. Ball
 Robert P. Ball
 William Ball Jr.
 John & Ann Barber
 Joseph Barbieri
 Carleen & Richard Baright
 Mr. & Mrs. Timothy L. Barnett
 Mr. & Mrs. Richard J. Barney
 Peggy & Peter Barrett
 Mr. & Mrs. William F. Barrett III
 Roger & Melissa Barry
 Mr. & Mrs. Lionel Barthold
 Julia Beaty
 John Behrens
 John & Joan Behrens
 Mr. & Mrs. Paul Bell
 Russell & Jane Bellico
 June Benerofe
 Mr. & Mrs. Thomas A. Benham
 Chuck & Edythe Bennett
 William H. Bernard
 Mr. & Mrs. Gregory A. Bibler
 Dr. & Mrs. Robert H. Birchenough
 Henry M. Bisner & Nancy L. Mackay
 Mr. & Mrs. Richard Bliss
 Mr. & Mrs. Ronald J. Blitzer
 Mr. & Mrs. Louis D. Bolton, II
 Serena G. Boyd
 Chuck Boylen
 Mr. & Mrs. Norman M. Bradburn
 Mr. & Mrs. Richard H. Brainard
 Bruno & Dorothy Brauner
 Jason Brechko & Heather K. Stoudy Brechko
 Mr. & Mrs. Joel Breslau
 Mr. & Mrs. Kenneth D. Brody
 Mr. & Mrs. John T. Brothers
 Mr. & Mrs. William B. Brower, Jr.
 Jeanne & Bernie Brown
 Mr. & Mrs. D. Tyner Brown
 Mrs. Miriam P. Brown
 Dr. & Mrs. Lawrence P. Brown, Jr.
 Lyda P. Bruce

Mr. & Mrs. Michael Bruder
 Pamela & David Bruno
 Mrs. Robert B. Bryant
 Mr. & Mrs. Douglas F. Bryant
 Joseph & Suzanne Buchyn
 Pam Bullock
 John & Lin Burgess
 Mr. & Mrs. Thomas F. Burleigh
 Mr. & Mrs. Sheridan L. Burleigh
 James N. Butler
 Fred Cady
 Henry Caldwell
 Mr. & Mrs. Ted Caldwell
 Mr. & Mrs. Joel W. Campanella
 Mr. & Mrs. Dale B. Campbell
 Mr. & Mrs. Michael Cantanucci
 Mary Lou Judd Carpenter
 Kevin Carroll
 George Carruthers
 Sally & Stuart Cartwright
 Mr. & Mrs. Alton Cartwright
 Marion Munley Cartwright
 Chris Caruso
 Jack & Barbara Casiere
 Mr. & Mrs. Lincoln D. Cathers
 Mr. & Mrs. Alan Cederstrom
 Mr. & Mrs. John R. Cetner
 Mr. & Mrs. Douglas Chase
 Nancy & John Chimento
 George R. Chriss
 Dr. & Mrs. Robert H. Christenberry
 Virginia A. Clark
 Joan I. Clark
 Mr. & Mrs. Bill Colley
 Carol Collins
 Jerry & Mary Bea Collins
 David L. Colson
 Dr. & Mrs. Dean L. Cook
 Mr. & Mrs. Kenneth J. Cooper
 Christopher & Deborah Corbett
 John H. Cornwall
 Christine E. Costello & Mr. Mark Vaughan
 Robert & Sandra Coulter
 Weston F. (Tony) Cowles
 Mr. & Mrs. Edward H. Crabbs & Family
 Bill & Janet Craft
 David J. & Shirley L. Craig
 Alison V. Craig Realty LLC
 Mrs. Dale M. Crisafulli
 Norm & Bobbi Crisp
 John & Lynne Crist
 John J. Crist, Jr.
 John & Joan Crosby
 Mr. & Mr. Charles Cumming
 Deby Dahlgren
 Mr. & Mrs. Thomas J. Damiani
 Mr. & Mrs. John D'Arco
 Mr. Lawrence G. D'Arco
 Eleaenor S. Darcy
 Mr. & Mrs. David Darrin
 Mrs. Margaret A. Darrin
 Mr. & Mrs. Joseph Datello
 Claire & David Davis
 Mr. & Mrs. Clifford Davis
 Holly & Bob de Buys
 Sarah Bixby Defty
 Warren & Sandra Dekleine
 Mr. & Mrs. Paul Demko
 Toni DeNicola

Dr. Jonathan M. DeSantis
 Mr. & Mrs. Joseph B. DeSantis
 Mr. & Mrs. Pieter J. Desmit
 Del & Lari Dhein
 Mrs. Jean P. Dickson
 David G. Diehl
 Mr. & Mrs. Thomas A. Dimond
 Mr. & Mrs. Marvin Dobert
 Mr. & Mrs. Jeffrey H. Donahue
 Linda F. Donaldson
 Mr. & Mrs. Donald E. Dorn
 Mary Lou Doulin
 Martin & Tacie Draznin
 Mr. & Mrs. William J. Dreyer
 Mr. & Mrs. Scott B. Dubin
 Mr. & Mrs. Charles Durand
 Mr. & Mrs. Martin Durkin
 Mr. & Mrs. Kemp V. Dwenger
 Mr. & Mrs. Joseph Dybas
 Dorothy H. Earl
 Mr. & Mrs. Roy Eastman
 Alice & Craig Eaton
 Robert L. Eddy
 Mark Edmonds
 Mrs. Olga Ellsworth
 Mr. & Mrs. Robert F. End
 John Engel
 Beverly C. Engle
 Mr. & Mrs. Kenneth Engler
 John Ennis & Susan Peer
 Robert Ervien, III
 Mr. Salvatore Ervolina
 Dr. & Mrs. Robert L. Evans
 Mr. & Mrs. Barry Faber
 Dr. & Mrs. Patrick Fantauzzi
 Robin W. Faraone
 J.P. Fasano & Mary Beth Mylott-Fasano
 Richard & Elna Faucher
 Thomas & Linda Feist
 Mr. & Mrs. Douglas Ferguson
 E. R. Ferguson, Jr.
 Adele Ferranti
 Mr. & Mrs. Russell Ferris
 Betty & Sherwood Finley
 Mr. & Mrs. Leo Fishel
 Mr. Joseph Fisher & Mrs. Nancy Wolf Fisher
 Mr. & Mrs. Thomas Fisher
 Mr. John H. Flagg
 Evan S. Flet
 David G. & Jane Corbett Floyd
 Laurence Fogelson
 Dr. Arthur Fontijn
 John H. Foote & Kristin Rupert
 John G. Forbes Jr.
 Judith & Peter Foster
 Dr. & Mrs. Robert D. Foulke
 Patricia A. Fox, M.D.
 Mr. & Mrs. Leighton Fox
 Art & Tonie Franz
 Mrs. Robert G. Fraser
 Paul Frederick
 Elizabeth Fredman
 John P. Freeman
 Jane T. Freihofer
 Audrey H. Frier
 Drs. James Fuchs & Kathryn O'Keefe
 Dr. & Mrs. John D. Fulco
 Melinda W. Fuller
 William P. Gambert

William P. Gates
 Nicholas J. Gazetos & Melanie O'Brien
 Mr. & Mrs. John L. Geils
 Elizabeth Geils
 Mr. & Mrs. John H. Geils
 Barbara D. Gerlach
 Mr. & Mrs. Robert Gianniny
 Thomas A. Gibbs, Sr.
 Mr. & Mrs. Ely Goldsmith
 Colleen & Lewis Golub
 Mr. & Mrs. Neil Golub
 Sonja Krause Goodwin
 Judy & Tim Gow
 Isabella H. Grant
 Mr. & Mrs. Geoffrey Green
 Priscilla Greer
 Mr. & Mrs. Alexander M. Guest
 Mr. & Mrs. William A. Haase
 Mr. & Mrs. Harold Haber
 Andy & Judy Hadjandreas
 Mr. & Mrs. Andrew D. Haigh
 Mr. & Mrs. Anthony Hall
 Carol & Fred Hammerman
 Dr. & Mrs. J. Peter Hansen
 Mr. & Mrs. Stuart Harmon
 John & Nancy Harrigan
 Miriam & Arthur Harris
 Walter F. Harrison III
 Marguerite H.V. Hasbrouck
 Mr. & Mrs. Arthur C. Hatfield
 Mr. & Mrs. Jack Havas
 John & Jane Caffry Hawn
 Mr. & Mrs. David D. Heath
 Betty B. Heintzelman
 Mr. & Mrs. C. Edward Herder
 Yvette & Victor Hershaft
 Michael J. Hershaft
 Mr. & Mrs. Arthur A. Hewitt
 Thomas Hickey
 Mr. & Mrs. Robert Higgins
 Robert D. Hill
 Mr. & Mrs. Thomas Hirschburg
 Dr. & Mrs. James M. Hitzrot, II
 Sarah E. Hoagland
 Mr. & Mrs. James H. Hock
 Mr. & Mrs. David Hoeschele
 Mr. & Mrs. Thomas Hoffman
 Mr. & Mrs. Edward C. Hooker
 Mr. Cam Hoopes
 Mr. & Mrs. Samuel P. Hoopes
 Mr. & Mrs. Henry J. Hotchkiss, Jr.
 Karen S. Howard
 Mr. & Mrs. Edwin A. Howe
 Mr. & Mrs. Robert J. Howe
 John & Ellen Hubbard
 Dr. & Mrs. Herbert B. Hudnut, Jr.
 Mr. & Mrs. Michael Huffman
 Mr. & Mrs. F. Dore Hunter
 Nancy A. Hyman
 Cheryl Inglis
 Mr. & Mrs. Paul B. Ingrey
 Keith & Sandie Jackson
 Robert Jeffrey
 Mark & Mary Johnson
 Mr. & Mrs. Harold J. Johnson
 Steven M. Jones
 Dr. & Mrs. Stewart G. Jones
 Mr. & Mrs. George H. Jorgensen
 Allene S. Jorgensen
 Mr. & Mrs. Robert J. Kafin
 Mr. & Mrs. John D. Kahler Jr.

Mr. & Mrs. Ferdinand C. Kaiser
 David F. Kaiser
 Stephen Kalajian
 Mr. & Mrs. John E. Kanis
 Mrs. Harvey Kayne
 Mr. & Mrs. Roger Kearns
 Tom Keating
 Mr. & Mrs. Alexander Keeler
 Mr. & Mrs. Lee Keeler
 Mr. & Mrs. Ross Kelley
 Dorothy C. Kennedy
 Mr. & Mrs. Ralph L. Ketcham
 Nancy M. Kimball
 Mr. & Mrs. C. Frank Kireker, Jr.
 Mr. & Mrs. Charles F. Kireker III
 Susan Klebl
 Eleanor K. Klein & Suzanne Klein
 Christine M. Knarr
 Mr. & Mrs. Gerard R. Koch
 Mr. & Mrs. John H. Koerner
 Rose Anna Kottler
 Eric L. Krantz & Cheryl S. Tucker
 Dr. Greg Krohel
 The Kubikian Family
 Ruth and Sandy Lamb
 Susan Lambeth
 Harvey E. Lambeth, Jr.
 Judith K. Larter
 Charles & Debbie Lasher
 Mrs. Judith P. Lavin
 Christopher Lawrence
 Elaine F. Lawrence
 Janet Lawrence
 Dr. & Mrs. Stuart M. Lazarus
 Mr. & Mrs. C.B. Leeser, Jr.
 John Legere
 Donald and Audrey Lehn
 Mr. & Mrs. Toby Leith
 Walt & Jane Lender
 Alex Levitch & Linda Goodwin
 Peter Leyh
 Mr. & Mrs. Robert Lichtenstein
 Mr. & Mrs. Clarence H. Linder, Jr.
 Mr. & Mrs. Charles T. Locke
 Mr. & Mrs. Joseph M. LoGiudice
 Mr. & Mrs. Robert A. Lorenson
 Aileen Roberts Lotz
 Dr. & Mrs. Denis N. Lusignan
 Mr. & Mrs. Robert F. MacFarland
 John & Amy Macionis
 Mr. & Mrs. Roger Mahieu
 Debra A. Malaney
 Mr. & Mrs. Paul F. Mallon
 Janet Mallon
 Mr. & Mrs. Donald Manasse
 Mr. & Mrs. Andrew Manchester
 Tim & Linda Mangione
 Marjorie H. Mannix
 Bruce & Sharon Manno
 Mr. & Mrs. Forrest E. Mars, Jr.
 Mr. & Mrs. Russell S. Marshall
 Mr. & Mrs. Robert A. Marshall
 Peter W. Marshall
 Al & Nellie Martenson
 Phyllis Marvin
 Louise & Larry Marwill
 Mr. & Mrs. Everesto Masiero
 Peter R. Mason
 Wesley & Anita Masten
 Joe & Miriam Mastrianni
 Robert W. Mayer
 Richard A. Mayer & Joan A.

Spaulding
 Mr. & Mrs. J. William Maynard
 Stephen J. Maxim
 Colin C. McAneny
 Mr. & Mrs. Joseph McCann
 Carolyn M. McCarthy
 Eugenia McCaw
 David & Terry McConaughy
 Walter & Isabel McConnell
 Donald McGrath
 Laura McGrew
 Mr. & Mrs. Philip W. McLaughlin
 Mr. & Mrs. Donald McMahan
 Ann D. McMillan
 George and Kathleen McNamee
 Edward W. McNeil
 Marc & Cathy Meacham
 Mr. & Mrs. Richard Mead
 Laura S. Meade
 Mr. & Mrs. S. Christopher Meigher III
 Jim & Sheilagh Menzies
 Mr. & Mrs. Peter Menzies
 Mr. & Mrs. Robert Meroles
 Barbara L. Meyer
 Mr. & Mrs. Alan Michalowski
 Anne & Don Middleton
 Christian & Nancy Miller
 Mrs. Elizabeth A. Miller
 Wendy E. Miller
 Mr. & Mrs. Albert P. Mitchell Jr.
 Kimberly I. Molle
 Frank Montbriand
 Ursula H. Montbriand
 Mr. & Mrs. Sanford W. Morhouse
 Mr. & Mrs. James R. Morris
 William J. Morris
 Robert C. Morris, Esq.
 Henry H. Mouradian
 Hon. & Mrs. G. Thomas Moynihan, Jr.
 Marisa Muratori
 Neil V. and Janet Murray
 Laurie Gene Mygatt
 Mr. & Mrs. Peter H. Nachbur
 Mr. & Mrs. James Nassau
 Mr. & Mrs. William F. Neeb
 Mr. & Mrs. Robert J. Nemer
 Joshua Nemer
 Arthur E. Newkirk
 Noelle B. Nielsen
 Dr. Sandra Nierzwicki-Bauer
 Linda B. Nizolek
 Mr. & Mrs. Timothy Noble
 Patricia A. Nolan
 Harvey & Betty Noordsy
 Mr. & Mrs. J. Mark Noordsy
 Marilyn M. Nowak
 Audrey O'Brien
 Daniel O'Brien
 Mr. & Mrs. Daniel O'Brien
 Nelson & Adelia Ockerbloom
 Jim & Nancy O'Connor
 Mr. & Mrs. Julian Offsay
 Dr. Daniel O'Keefe
 Marten Oldenburger
 Dr. & Mrs. Donald R. Oliver
 William & Jane Olsen
 Peg Olsen
 Jim & Madeline O'Toole
 John Pariseau
 Richard & Ann Parker

Despite our best efforts to ensure the accuracy of our recognition list, errors sometimes occur. If your name has been omitted or misprinted, please accept our sincere apologies, and contact the LGLC office at (518) 644-9673.

Philip D. Parks & Leslie A. Blair
 Mr. & Mrs. Blackwood Parlin
 Mr. & Mrs. C. Christopher Parlin
 Mr. & Mrs. Kenneth B. Parlin
 Charles C. Parlin, Jr.
 Mrs. R. Parmley
 Mr. & Mrs. Mario Peano
 Robert Pedlow
 Mr. & Mrs. Kyle Pemrick
 Michael B. Penfield
 Walter L. Perkins
 Mr. & Mrs. John J. Perkins
 Daniel W. Pettengill
 Mr. & Mrs. Leo Phaff
 Richard & Ruthellen Phillips
 Mr. & Mrs. Robert Pierce
 Mr. & Mrs. John C. Pinelli
 Joan Pipito
 Daniel R. Plumley
 Mr. & Mrs. Robert J. Potter, Jr.
 Mr. & Mrs. Robert J. Powell
 Mr. & Mrs. John F. Prendergast
 Christine Pucek & Christine Georgia DiGaetano
 Mr. & Mrs. Charles Puckette
 Rosemary & Frank Pusateri
 Dr. & Mrs. Brian Quinn
 Mr. & Mrs. Anthony P. Reale
 Lenore & Jack Reber
 Ann & Frank Redican
 Mr. & Mrs. Daniel A. Reingold
 Brenda B. Rew
 Sandra J. Rhoades
 Mr. & Mrs. Donald H. Rice
 Mr. & Mrs. Peter Rief
 Mr. & Mrs. Raymond Rinella
 Dr. & Mrs. Walter Robb
 Hugh & Chris Roberts
 Mr. & Mrs. Hammond Robertson
 William & Nancy Rogal
 Nancy R. Rooney
 Mr. & Mrs. Andrew A. Rooney
 Cynthia & David Rosbrook
 Mr. & Mrs. Richard Rosselli
 Mr. & Mrs. Albert Rosselli
 G. Jim Roth
 Joe Roulier
 Mr. & Mrs. Henry M. Rowan
 Elizabeth J. Ryan
 Mr. & Mrs. John K. Ryder
 Joan H. Ryder
 Donald C. Sanborn
 Dr. & Mrs. Howard P. Sanborn
 Ann Winters Sanger
 Eleanor Sapakoff

Nancy L. Scarzello
Harvey W. & Margaret E. Schadler
Kenneth & Elizabeth Schember
Roland & Claire Schmitt
Robert Schmitt & Aaltje Ten Voorde
John & Peg Schroeder
Mr. & Mrs. Cortlandt E. Schult
Kurt & Lynn Schumann
Raymond & Carolyn Schumann
Dr. & Mrs. David W. Schwenker
Mr. & Mrs. Winfield A. Scott
Bruce W. Scott
Beverly Sebold
Judith Seligman & Eleanor Klein Poa
Val M. Serbalik
Richard & Mary Sharp
A. Jane Shires & Family
Mr. & Mrs. Joel M. Sieger
Mr. & Mrs. Peter Sime
Lenton D. Simms
Maria R. Simoneau
Jack Simrell, S & S Tree Service, Inc.
Mr. & Mrs. Robert C. Singer
Mr. & Mrs. George C. Singer
Kathleen Sinnott
Pete Skinner & Bonnie Cook
Jane Skorko
Mr. & Mrs. Stephen Sloan
Fran Sloatman & Tom Harding
Ms. & Mrs. Manning J. Smith
Barbara E. Smith
Mrs. Elisabeth A. Smith
Mr. & Mrs. Douglas A. Smith
Elaine S. Smith
Mr. & Mrs. Peter F. Smith
Mr. & Mrs. Harris F. Smith
Mrs. Roberta Smith & Mr. Michael
Martin
Mr. & Mrs. Edward W. Smith
Mr. & Mrs. William Sondermeyer
Jeffrey L. Spence
Mr. & Mrs. Peter D. Spencer
Daniel A. Spitzer, Esq.
Dr. & Mrs. S. Richard Spitzer
Mr. & Mrs. Frank A. Sprole
Tom & Cheri Stevens
Mr. & Mrs. Scott Strickling
Mrs. Marjorie Sullivan
Shawn Sullivan
Amy Spencer Summa
Mr. & Mrs. Henry Summa
Jim & Kathleen Suozzo
Glenn S. Suplee
Mr. Christopher Tate & Dr.
Judith Tate
Mr. & Mrs. Richard Templeton
Frank & Nancy Tetz
Mr. & Mrs. George Thom
David & Anne Thomas
David Thomas-Train
Richard & Lisa Timm
Linda & Jack Toner
Kenneth Tornvall
Mr. & Mrs. H. Craig Treiber
Mr. & Mrs. Phillip Trembley
Dr. & Mrs. Charles H. Turner
Peter & Caroline Van Dyck
Anthonie C. Van Ekris
David C. Van Hart
Mr. & Mrs. Kirby Van Vleet
Mr. & Mrs. Jeffrey D. Van Wert

Donna Van Wirt
Richard VanRhyne
Mr. & Mrs. Michael L. Vaughn
Mr. & Mrs. Jean C. Victor
Mr. & Mrs. Peter J. Voll
Mr. & Mrs. Etto E. Von Zastrow
Mr. & Mrs. David Vrooman
Mr. & Mrs. Peter Waite
Dr. Robert B. Wallace
W. Dean Wallace
Mr. & Mrs. James H. Wallace
Ann & Emile Walraven
Bill & Linda Ward
Mr. & Mrs. John P. Warner
David & Dorothy Warren
Mr. & Mrs. Martin Wasserman
Mr. & Mrs. Lawrence M. Waterhouse
Donald C. Waters
Thomas J. Weag
Peter Weill
Mr. & Mrs. Joseph Welsh
Mrs. Aileen F. Wester
Margriet D. Wetterau
Mr. & Mrs. Kevin H. Whalen
Mrs. Phyllis O. Wheatlake
Mr. & Mrs. Burton K. Wheatlake
Dr. & Mrs. D. Billings Wheeler
Mr. & Mrs. Robert L. Whitaker
Mr. & Mrs. Philip R. White
Mr. & Mrs. John Whiteley
Frank J. Williams, Jr.
Adrienne Wilson
Mrs. Elizabeth D. Wilson
Douglas J. Wilson
Mr. & Mrs. Geoffrey Wilson
John Wimbush
Alison Windle
Mr. & Mrs. Stephen Wink
Mrs. William V. Winslow
Mr. & Mrs. Donald K. Winyall
Marian & Norman Wolgin
I. Robert Wolgin
Kevin J. Wood
Mr. & Mrs. Robert G. Woodard
Mr. & Mrs. Robert D. Wotton
Mr. & Mrs. Theodore Wray
Joanne Dittes Yepsen
Mr. & Mrs. E. Howard Youmans
Mr. & Mrs. E. Richard Yulman
Mr. & Mrs. Vincent J. Zeccola
Mr. & Mrs. Charles Zeese
Mr. & Mrs. Thomas F. Zetterstrom
Mr. & Mrs. Richard Zinn

Gifts in Honor Of

Mr. & Mrs. D. Tyner Brown
by Dr. & Mrs. Paul Penfield, Jr.
Dr. Dean Cook
by Ms. Marnie Wikel
Dr. Dean Cook's Birthday
by Dr. William M. Craft, Eaton
Cummings Group
by Ms. Carol Schoenwetter
by Ms. Geraldine Cook
by Ms. Kathleen Guy
by Mr. & Mrs. D. Kirby Van Vleet
Ms. Martha A. Duncan
by Dr. & Mrs. Paul Penfield, Jr.
The marriage of Juliette Gilkes and
Matt Gorman

by Mr. & Mrs. Kenneth G. Gilkes
Mr. & Mrs. Jack Havas
by Nancy Dalton Rogal
Mr. & Mrs. Victor Hershaft
by Nancy Dalton Rogal
Mr. & Mrs. Robert Hill
by Ms. Marnie Wikel
by Mr. & Mrs. James D. Zonino
Michael Huffman
by Philip & Martha White
Dr. Patricia P. Jonas & Dr. Craig C.
Jonas
by Dr. & Mrs. Paul Penfield, Jr.
Michael Lau
by Philip & Martha White
Mr. & Mrs. John Macionis
by Mr. Timothy Gow
Piper Menzies
by Meredith E. Menzies
James O'Connor
by Mr. Timothy Gow
Mr. & Mrs. David W. Penfield
by Dr. & Mrs. Paul Penfield, Jr.
Mr. Michael B. Penfield
by Dr. & Mrs. Paul Penfield, Jr.
Lucille and Selig Popik
by Ms. Mildred J. DeGraff
Mr. & Mrs. Donald Rice
by Mr. Timothy Gow
Mr. & Mrs. Henry Rowan
by Mr. Timothy Gow
Mr. & Mrs. Harvey Schadler
by Nancy Dalton Rogal
Mr. & Mrs. George Singer
by Mr. Timothy Gow
Bonnie & Peter Skinner
by Ms. Marnie Wikel
Prof. & Mrs. Guilford L. Spencer, II
by Dr. & Mrs. Paul Penfield, Jr.
David & Barbara Taylor
by Mr. & Mrs. Douglas F. Bryant
Kirby Van Vleet
by Philip & Martha White
D. R. Williams
by Dr. Dean Cook

Gifts in Memory Of

Peter Bixby
by Mr. & Mrs. Richard J. Bartlett
Edward J. Bogue
by Mr. & Mrs. Edward L. Pieper

Robert B. Bryant
by Mr. & Mrs. James M. Beaty
by Mr. & Mrs. George Beck
by Mr. & Mrs. Jim Brock
by Doug, Kim and Evan Bryant
by Mrs. Shirley Bryant
by Mr. & Mrs. David Craig
by Mr. & Mrs. Joseph Daltner
by David, Susan & Hannah Darrin
by Mr. & Mrs. Clifford Davis
by Mrs. Margaret A. Darrin
by Mrs. Delmar R. Dhein
by Mr. & Mrs. Robert Di Marco
by Rev. and Mrs. Helmut Dietrich
by Mr. & Mrs. Ralph Ebner
by Ms. Robin Faraone
by Mr. & Mrs. David Forshay, Jr.
by Mr. & Mrs. Arnold Goetsch
by Mr. & Mrs. Robert Goetsch
by Mr. & Mrs. Arthur Hatfield
by Ms. Dorothy Henry
by Mr. & Mrs. George Holzworth
by Mr. & Mrs. John B. Howland
by Mr. & Mrs. Keith Jackson
by Faculty & Staff of Jefferson
Elementary School
by Mr. & Mrs. Lyle Johnson
by Mrs. Dorothy C. Kennedy
by Mr. & Mrs. Arthur Klein, Jr.
by Mr. & Mrs. Robert A. Lorensen
by Mr. & Mrs. Fred MacPherson
by Mr. & Mrs. Peter McNamara
by Stuart & Joan Merz, Melinda
Gabarik, & Wendy Wells
by Norman & Patricia Merz
by Mr. & Mrs. Richard Murphy, Jr.
by Mr. & Mrs. J.G. Michael
by Mr. & Mrs. Richard E. Oliver
and Family
by Mr. & Mrs. Charles Puckette
by Mr. & Mrs. Thomas Punch
by Mr. & Mrs. Stephen Rottier
by Mr. & Mrs. Henry M. Rowan
by Mr. & Mrs. Richard Sandman
by Mr. & Mrs. Winfield Scott
by Ms. Ann Shakeshaft & Mr.
Michael Tobey
by Mrs. Elaine S. Smith
by David, Bobbi, Scott and Ryan
Taylor
by Mr. & Mrs. Jack Toner
by Mr. & Mrs. David Verner



With funding from the Lake George Rotary Club, the LGLC has produced *Conservation Options for Private Landowners*, a brochure designed to educate landowners about available alternatives for protecting family lands. Please contact the LGLC office at 518-644-9673, for a copy of the brochure.

by Ms. Jane B. Wallin
 by Mr. & Mrs. George Zieger
 Joseph J. Buchyn
 by Ms. Jean F. Bambury & Ms.
 Margaret M. Tedesco
 by McCary & Huff, LLP
 by Ms. Joan B. O'Hare
 by Russell & Sally Hohne
 John H. Cornwall Jr.
 by John H. Cornwall
 Margaret T. Cornwall
 by John H. Cornwall
 John L. Engel
 by Greg & Carolyn Carroll
 by Irmgard V. Dick
 by Eve Mastropaolo
 by Gary, Meg, Daniel, and
 Madeline Smith
 by Mr. John Engel
 by Mr. & Mrs. Gregory Norton
 Robert W. Freihofer
 by Ms. Jane T. Freihofer
 Ginny Hill
 by Jill D. Edmonds
 Robert Jappell
 by Mr. & Mrs. Frank Pusateri
 Lamar McCaw Kenny
 by Eugenia McCaw
 Ms. Ruth Freihofer Lang
 by Mr. & Mrs. Charles Mason
 Donald Marquis
 by Richard & Lisa Timm
 George McKeon
 by Mr. & Mrs. Robert A.
 Lorenson
 Virgil J. Mendel
 by Mrs. Virgil J. Mendel
 Leslie Munzer
 by Mr. & Mrs. Jack Haanen
 Allison North
 by the Bryant Family
 by Mr. & Mrs. David Darrin
 Janet Harbison Penfield
 by Martha A. Duncan
 Adelaide B. Perkins
 by Mr. & Mrs. Walter L. Perkins, Jr.
 Richard Rottier
 by Mr. & Mrs. Richard Bliss
 by the Bryant Family
 by Patrick & Kelli Cartwright
 by Ms. Jane B. Rottier
 by Ms. Jane E. Rottier
 by Mr. & Mrs. Henry M. Rowan
 by Mr. & Mrs. Greg Taylor
 Wally Saxe
 by Frank & Rosemary Pusateri
 Albert H. Singer
 by Mr. & Mrs. Michael Huffman
 by Mr. & Mrs. George C. Singer
 by Mr. & Mrs. Robert Singer
 by Mr. & Mrs. George Waite
 Ralph Stiles
 by Mr. & Mrs. Richard J.
 Bartlett
 Herb Wilen
 by Mr. & Mrs. Stephen Rottier
 by Patrick & Kelli Cartwright
 Robert Arlington Wyant
 by Tom & Suella Young
 by Sidney & Catherine
 Klingerman

Corporations/Foundations/ Associations

Adamson Irrevocable Trust
 Adirondack Mountain Club -
 GF/Saratoga Chapter
 Aetna Foundation, Inc.
 The Ayco Charitable Foundation
 Bob & Ginger Cannon Bailey
 Foundation
 Carolyn & Kenneth D. Brody
 Foundation, Inc.
 Carillon Garden Club
 Central New York Community
 Foundation
 Charlotte Palmer Phillips Foundation, Inc.
 The J.P. Morgan Chase Foundation
 The Community Foundation for the
 Capital Region
 Community Foundation of New Jersey
 The Community Foundation of Greater
 Birmingham
 The Margaret A. Darrin Foundation
 de Buys Family Advised Fund
 Deutsche Bank Americas Foundation
 Dunhams Bay Association, Inc.
 Fidelity Investments Charitable Gift
 Fund
 Fields Pond Foundation, Inc.
 FM Global Foundation
 Charles C. Freihofer III Advised Fund
 Helen V. Froehlich Foundation
 The Fund For Lake George
 GE Foundation
 The Lewis and Colleen Golub
 Foundation, Inc.
 Price Chopper's Golub Foundation
 The Foundation of Neil and Jane Golub
 Gull Bay Area Association
 The Hague Charitable Foundation
 Harding Education & Charitable Trust
 Jack & Anita Havas Foundation Inc.
 The C. Edward & Gloria Herder
 Foundation Inc.
 Higgins Family Foundation
 The John C. & Susan K. Hubbard
 Foundation
 IBM International Foundation
 International Paper Company
 Foundation
 Keeler Motor Car Company
 Dorothy C. Kennedy Trust
 John H. Koerner Fund
 Lake George Community Garden Club
 Lake George Watershed Conference
 Land Trust Alliance
 John Legere Living Trust
 Lower Mohawk Land Conservancy
 McGrath & Company, Inc.
 Nachbar Family Fund
 Pepsico Foundation
 Perry Enterprises, LLC.
 Pilot Knob Association
 Pucek Family Trust
 Queensbury Senior Citizens, Inc.
 Retired & Senior Volunteer Program
 The Rice Family Fund
 Robb Charitable Trust
 Rochester Area Community Foundation
 Rotary Club of Lake George
 Henry M. Rowan Family Foundation,
 Inc.

Rush Island Improvement Association
 Schwab Fund for Charitable Giving
 The Douglas and Phyllis Smith Fund
 Spencer Family Fund
 State Employees Federated Appeal
 Texas Instruments Foundation
 The Chronicle
 The Treiber Family Foundation, Inc.
 United Technologies
 Vanguard Charitable Endowment
 Program
 Wellington Management Company, LLP
 Westchester Community Foundation

Gifts of Land

Thomas Adams, Christopher Lavin,
 Judith Lavin, and Lauren Ruttkamp
 Charles Freihofer and David Prol
 Hague Adirondack Charitable
 Foundation
 Kyle Monga Trust and Sean Monga
 Trust

Gifts of Conservation Easement

Amelie Porter and James Wallace

Gifts in Kind

Adirondack Cooperative Loon Program
 James Appleyard Photography
 Charlie Bain
 S. Lee Bowden, The Sagamore
 Bronx Science School
 Ted Caldwell
 Henry Caldwell
 Champlain Stone, LLC
 Church of the Blessed Sacrament
 Tom Clements, The Clements Firm
 Gary Colletti
 Community
 Workshop,
 Inc.
 John Crist, Jr.
 John D'Arco
 Darrin Freshwater Institute
 Mr. & Mrs. David Darrin
 David Diehl
 Anne Diggory
 Dean Dolbeck
 Mary Lou Doulin
 Joseph Dybas
 Essex County Department of Public
 Works
 Steven Flint
 Mr. & Mrs. Arthur Franz
 Audrey Frier
 Rocco & Mandy Giampaolo
 Tim Gow
 Carl Heilman II
 Adam Hoffman
 Joan Hoffman
 Benjamin Huang

Mr. & Mrs. John Hubbard, Jr.
 Jeffrey G. Kelly
 King Boatworks, Inc.
 Larry & Maryde King
 Lake George Kayak Company
 Sandy & Ruth Lamb
 Peter Menzies
 Dr. Sandra Nierzwicki-Bauer
 Scott Parillo
 Thomas Passaro
 Scott Perez
 Ardie Pierce
 Gray Potter
 Murphy Potter
 James L. Reveal
 Mr. and Mrs. Donald Rice
 Riverside Gallery
 Christine Roberts
 Joan Robertson
 Nancy Rogal
 The Sagamore
 Mr. & Mrs. Sanford
 Nancy Scarzello
 Nina Schoch
 Jeff Schumann
 Mr. & Mrs. Robert Seeley
 Kathy Sinnott
 Peter Skinner
 Stewart's Shops
 Tom Taylor
 David Thomas-Train
 Ticonderoga Historical Society
 Joyce Usher
 Eric Velez
 Frank Wang
 Warren County Soil & Water
 Conservation District

Special thanks to the following for their photos in this issue: Cover, top panel and middle panel left and center by Carl Heilman II/Wild Visions, Inc.; pg 2, frog eggs by Karin Badey; pg 3, great horned owl by Janet Haas; pg 4, Darrin Family and Virginia Rowan Smith by James Appleyard Photography; pg 4, Mr. and Mrs. Henry M. Rowan by Pachter Photography. All other photos provided by LGLC board and staff.

boots



boats

Winter 2006 field trips

Discover the natural history of the area through the Lake George Land Conservancy's excursions and events! Trips are fun, free, and informative and will take you out to the mountains and on to the waters of Lake George. As you explore the Conservancy's preserves, learn why land conservation is important and what the Conservancy is doing to protect the lake. Space is limited, so reservations are necessary for all trips. Please call (518) 644-9673 for more details and to register. Come prepared with appropriate clothing, water, and a lunch or snack unless otherwise noted

**Sat., January 7 –
Cross-Country Ski Trip
at Cat and Thomas Mts.
Preserve, Bolton**

10:00 a.m. - 3:00 p.m. ~ Join our volunteer guide, David Thomas-Train, on a cross-country adventure at this 1850-acre preserve. Old logging roads provide paths to the summits of Thomas and Cat Mountains, rewarding participants with expansive views of the frozen southern Lake George basin below. Total trail length is approximately 8 miles, round-trip. Experienced skiers only – registration is limited to

5 people, so call soon to reserve your space on this exciting trip!

**Sat., February 18 – Walk on
Water, Snowshoe to Dome
Island, Bolton**

9:00 a.m. ~ Experience the slippery side of Lake George—no whitecaps to contend with but be prepared for the lake's characteristic wind and wintry beauty! Walk, snowshoe or ski over a mile of frozen Lake George to explore Dome Island. Nearly centered at the widest part of Lake George and with the highest island elevation on the lake,

Dome Island was once an important military lookout during the French and Indian War. Today, it remains a unique ecological gem, having been protected from human disturbance since 1915.

**Sat., March 11 & Fri., March 24 –
Owl Prowl Snowshoe at Cat and
Thomas Mts. Preserve, Bolton**

6:00 p.m. - 8:30 p.m. ~ Join us on a nighttime hike to call for and listen to the hoots, wails and shrieks of owls. These nocturnal predators are a vital component of the Adirondack ecosystem and are rarely seen by people. The hike will

include a brief discussion of natural history and identification skills of the most common Adirondack owls, including the northern saw-whet, eastern screech, barred, and great-horned owls. Bring your own snowshoes (or contact us for rental information), a flashlight or headlamp (optional), and wear warm, sound-dampening clothing (try to avoid noisy materials such as nylon).

**Sat., April 22 – Earth Day
Volunteer Work Day at
Gull Bay Preserve**

9:00 a.m. - noon ~ Earth Day, which began in 1970, is now celebrated by millions of people worldwide. Be a part of this extraordinary worldwide movement to protect our planet, our children and our future, by acting locally. The LGLC will be improving Gull Bay Preserve's trail system and planting trees for erosion control.



LAKE GEORGE
LAND CONSERVANCY

LAKE GEORGE LAND CONSERVANCY
P.O. BOX 1250
LAKE SHORE DRIVE
BOLTON LANDING, NY 12814
(518) 644-9673

NON PROFIT
ORGANIZATION
U.S. POSTAGE
PAID
Bolton Landing, NY
Permit No. 27

“The care of the Earth is our most ancient and most worthy, and after all our most pleasing responsibility. To cherish what remains of it and to foster its renewal is our only hope.”

– Wendell Berry, author