

Berry Pond

PRESERVE

The Lake George Land Conservancy (LGLC) purchased the 1,436-acre Berry Pond tract in southern Lake George on January 22, 2008, for \$2.654 million, marking it the largest dollar purchase in LGLC's history at that time. The purchase was made possible in part through a loan from the Open Space Conservancy (OSC) and funding provided by the Helen V. Froehlich Foundation. On March 26, 2015, LGLC sold Berry Pond to the state and it is now part of the New York State Forest Preserve.

The 1,436-acre Berry Pond tract includes the headwaters of West Brook, a tributary that has a significant impact on the water quality of Lake George, and lies within the towns of Lake George, Lake Luzerne and Warrensburg.

This single project connects nearly 10,000 acres of protected land, linking New York State's Prospect Mountain, The Nature Conservancy protected lands, and other land owned by the Village and Town of Lake George.

The Berry Pond tract includes Berry Pond, which is an active beaver pond and a former great blue heron rookery. The highpoints of the land provide expansive views of Lake George to "the Narrows" and southern views to Butler Pond and the lower Adirondacks. One of the unique features of Berry Pond is that it drains in two directions: at the eastern end to Lake George and the western end to the Hudson River.

Situated adjacent to the existing Lake George Recreation Center, the Berry Pond tract provides significantly expanded outdoor recreational resources for residents and area guests.

Hunting and trapping is allowed at the preserve; appropriate state licenses are required. Hikers should be aware of hunting seasons and wear bright colors and hike in groups to minimize risk.

Transfer Road
Lake George, NY 12845
Warren County

Trailhead Coordinates:
43.401485, -73.733273

From the Northway (I-87): From Exit 21 head west on 9N for 0.5 miles from the southbound exit (or 0.6 miles from northbound exit) to Transfer Road on the right. Follow Transfer Road past the transfer station to a large parking area at the top of the hill (about half of a mile).



The Berry Pond Preserve trails are accessed via the Lake George Recreation Center trail system. *Follow the LGLC blue markers through the Rec Center trails to Berry Pond.*

Berry Pond Preserve is owned and managed by New York State. To report any problems or acquire any permits, please contact DEC Forest Ranger Evan Donegan at 518-656-9086 or the DEC Regional Office at 518-897-1300. For emergencies, call DEC dispatch at 518-891-0235 or call 911.

Visit us online at www.lglc.org for information on our nature excursions and events, land protection, and preserving Lake George's unique natural heritage.

4905 Lake Shore Drive
 P.O. Box 1250
 Bolton Landing, NY 12814
 (518) 644-9673
www.lglc.org

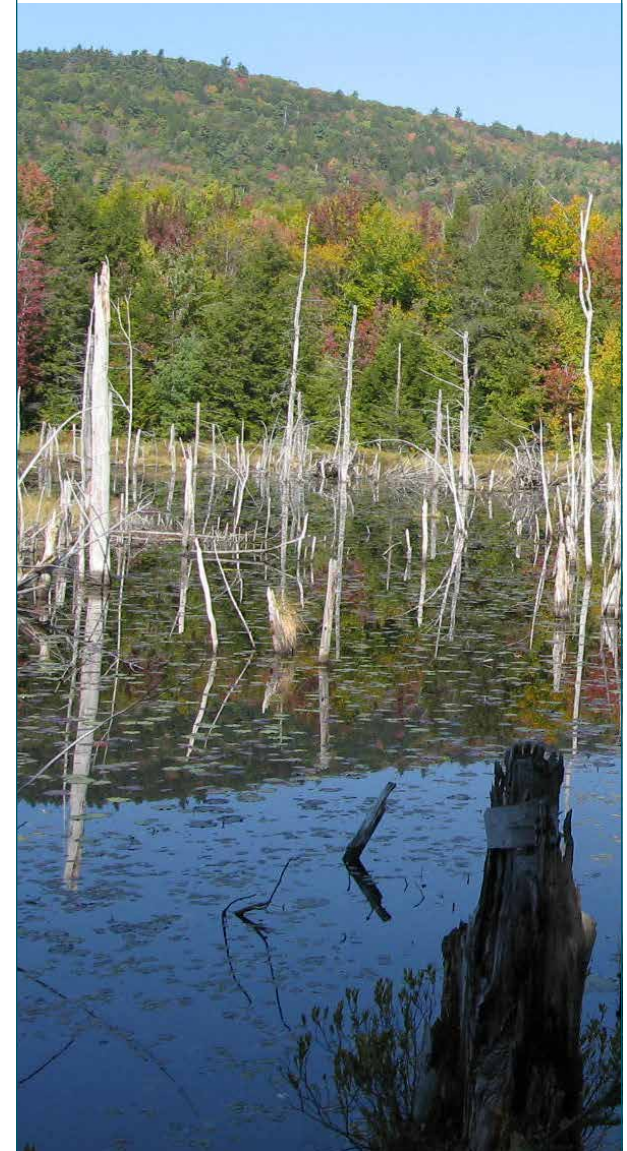


LAKE GEORGE
 LAND CONSERVANCY

Updated 06/2015

Berry Pond

FOREST PRESERVE



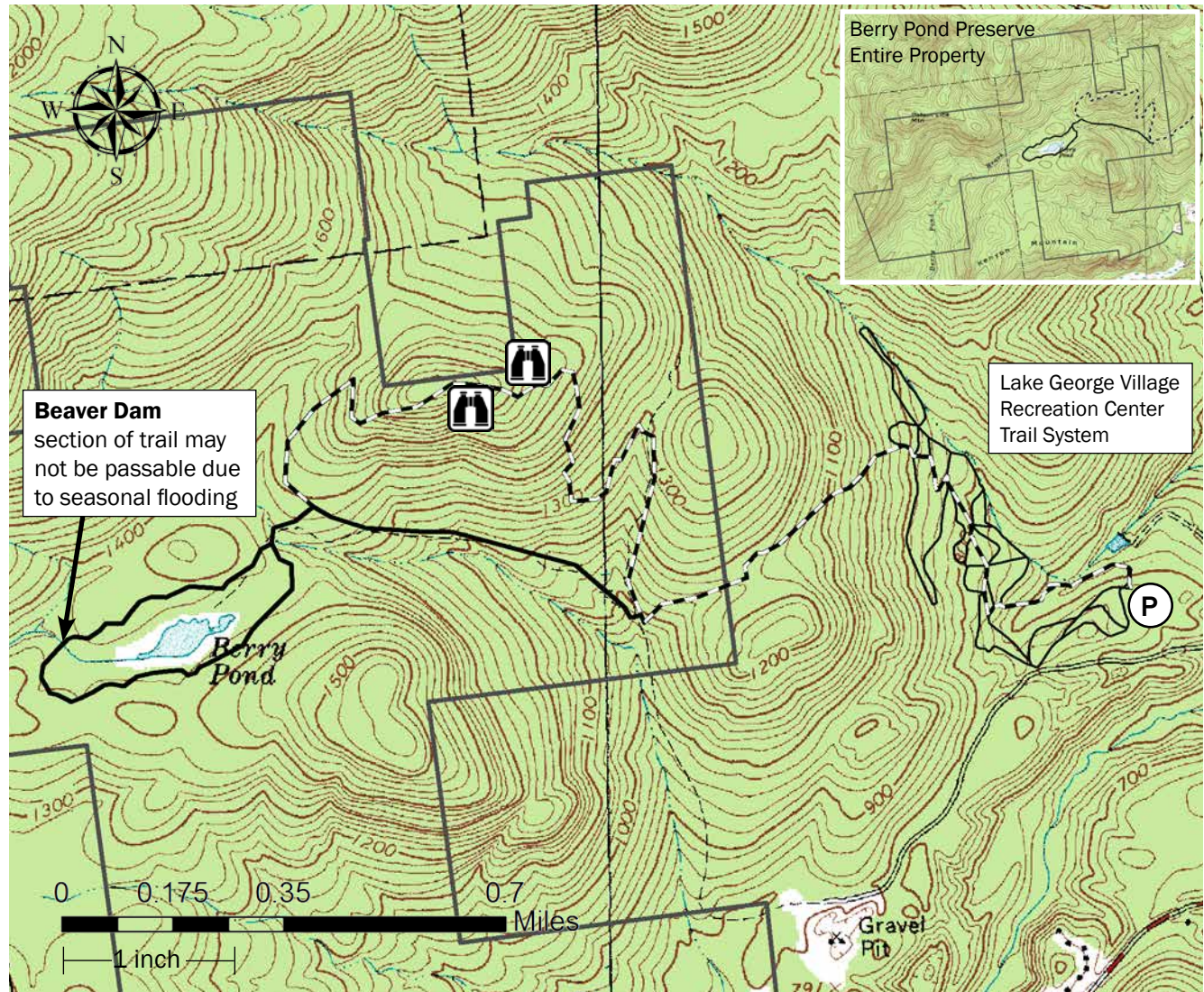
Berry Pond

PRESERVE TRAILS





Access to the Berry Pond trails is gained through the Village of Lake George's Recreation Center trail system. From the kiosk, follow the trail with LGLC's blue markers through the Rec. Center trail system. **Please look carefully for a number of directional changes.** After making a sharp left turn, the blue trail ascends 280 feet over 0.4 miles to the Berry Pond land boundary. It then descends gradually for another 0.2 miles to the intersection with the orange trail. Hikers can then choose to continue along the blue trail for scenic views or the orange trail to Berry Pond itself. **Please note that the orange trail also serves as a snowmobile trail, so use caution in the winter.**

The blue trail climbs 520 feet over about 1 mile to reach views looking north at Lake George (1,620-ft elevation) and south at Butler Pond and Vermont (1,640-ft elevation). It then descends gradually on a dirt road to reconnect with the Orange trail just north of the Berry Pond loop. As noted on the map, the blue trail makes two sharp turns. **Please look carefully for these directional changes.**

From the initial junction of the orange and blue trails, the orange trail follows a dirt road for 0.56 miles (300-ft elevation gain) to the second junction with the blue Trail. The orange trail then leads southwest for 0.1 miles along a dirt road to the Berry Pond loop. Following the loop clockwise, the trail continues along the dirt road for approximately 0.25 miles before cutting into the woods for a forested, pond-side trail for the remaining 0.75 miles of the loop. Note: use caution where the trail crosses below the beaver dam. **During high water, it may not be passable.**



PRESERVE MAP KEY

-  Blue Trail 2.7 miles
-  Orange Trail 1.7 miles
-  Parking Lot/Trailhead
-  Scenic Lookout - Noosa's Bluff
The lookout was named by Rick and Evelyn Spawn after their yellow lab and its namesake in Australia.

DEPT. OF ENVIRONMENTAL CONSERVATION GUIDELINES

- Camping is permitted up to three nights, but you must be at least 150 feet from a road, trail, spring, stream or pond. Larger groups or more nights requires a permit.
- Do not pick the wildflowers, cut or mark the trees, remove any rocks, fossils or artifacts or disturb the animals.
- No motorized vehicles of any kind allowed.
- Fires are permitted, but must be attended to at all times.
- Please do not litter. Carry out what you carry in.
- The storage of personal property is prohibited.