

Godwin Preserve

The Isabel La Roche Godwin Preserve is a beautiful property of forests and vernal pools in the uplands of Bolton Landing. It was purchased in June, 2016 and its hiking trails were officially opened to the public on July 26, 2016.

The Bolton property includes a tributary of Indian Brook and large vernal pools for breeding amphibians. It is part of a large, unfragmented forest that adjoins Pole Hill Pond Preserve. Protecting this fragile property prevents excess nutrients and sediments generated by development from flowing into Indian Brook and Northwest Bay.

LGLC has created two hiking trails for passive recreation, exploration and education, which includes a lookout area for Pole Hill and High Nopit.

The preserve was named in memory of the sellers' mother, who loved the land and Lake George.

We would like to give a special thanks to Richard Hayes Phillips for making this acquisition possible.

**Padanarum Road
Bolton Landing, NY
12814**

Trailhead Coordinates:
43.634642, -73.655465



From the Northway (I-87): Take exit 24 for Bolton Landing/Riverbank Road. Follow Riverbank Rd/County Rt 11 east for 4 miles. Turn left onto Church Hill Rd. After 0.4 miles turn left onto North Bolton Rd/Rt 41 and continue for 1 mile. **Veer right to continue onto Padanarum Road and continue for another 1.9 miles to a "Y" where Trout Falls Road breaks off to the left and Padanarum continues to the right. Proceed on Padanarum Road for 0.2 miles to the parking lot on the right.

From Bolton Landing: From Sagamore Road in Bolton Landing, travel north on Route 9N for approximately 1.7 miles to County Rt 11/Bolton Landing-Riverbank Road. Turn left onto County Rt 11, then an immediate right onto North Bolton Rd/County Rt 41. Follow this road for 1.7 miles. Continue from **above.

The Lake George Land Conservancy's nature preserves are open to the public from dawn to dusk year-round for educational, scientific, and passive recreational pursuits.

4905 Lake Shore Drive
P.O. Box 1250
Bolton Landing, NY 12814
(518) 644-9673
www.lglc.org



Godwin Preserve



Godwin Preserve

TRAILS

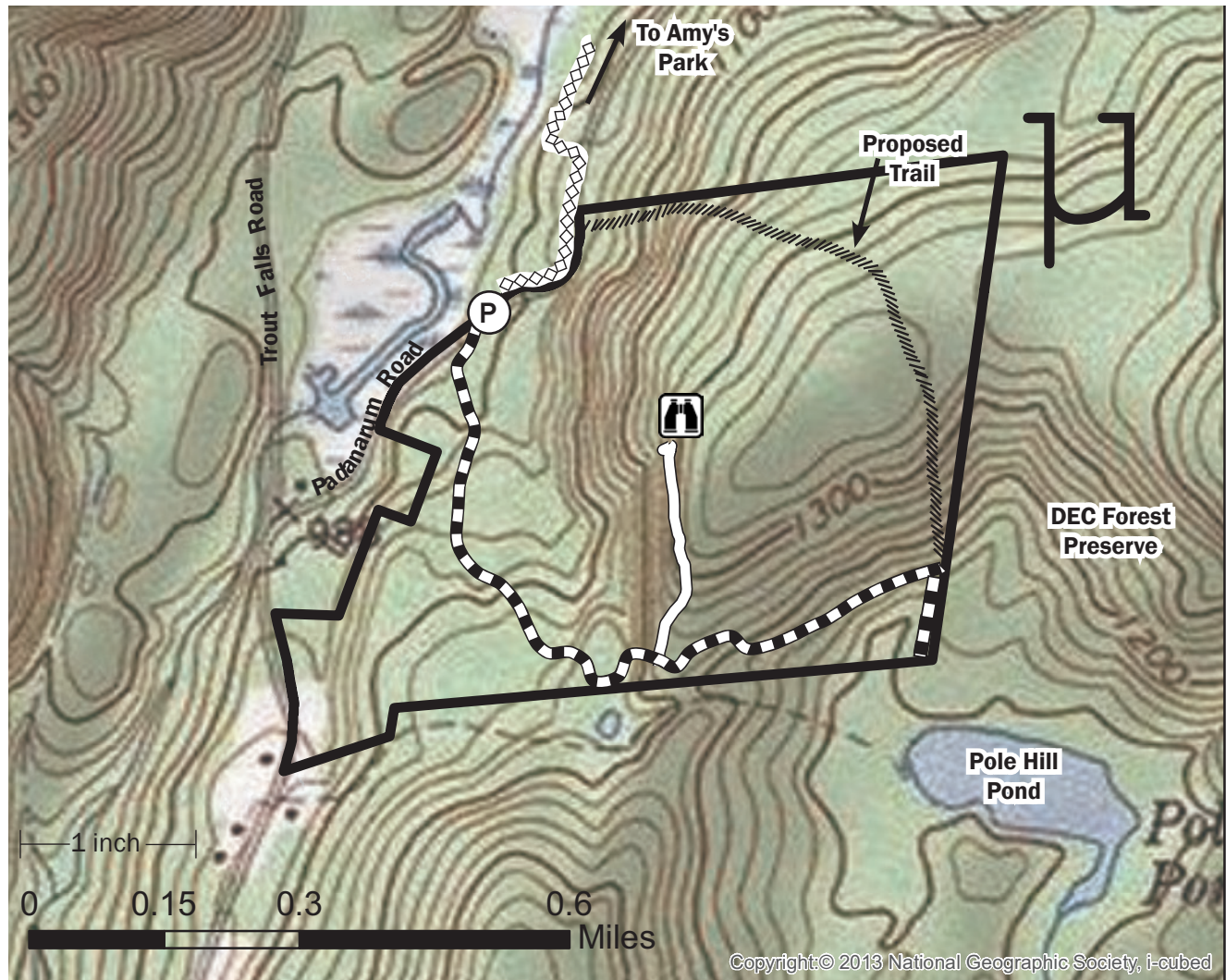
Godwin Preserve has two trails for hiking: the red trail, which is part of a future loop trail, and the yellow trail, which leads to a view of the Amy's Park wetlands and High Nopit.

From the Padanarum Road parking area the red trail follows a logging road for 0.5 miles, with a gradual upward grade, then leaves the road for 300 feet and climbs a short, fairly steep ledge, before returning to the road.

At this point, the red trail intersects with the yellow trail. Turning onto the yellow trail, it climbs steadily for 0.3 miles to a lookout, with views northwest of High Nopit and the wetlands of Amy's Park.

If you continue on the red trail, it follows the road gradually downhill for 0.5 miles until it reaches the corner of the preserve, which adjoins the Pole Hill Pond Forest Preserve. (See LGLC's Pole Hill Pond Trail Map.)

To reach Amy's Park, use the connector trail, which has yellow triangles. From the parking lot, go north on Padanarum Road for 0.25 miles until the trail turns down an embankment and into the woods. Follow this relatively flat trail for 0.25 miles until it intersects with Amy's yellow trail. Going left takes you across the stream to Trout Falls Road. If you go right, that will take you to the lookout and Amy's Park kiosk and parking lot.



PRESERVE MAP KEY

	Red Trail	1.14 miles
	Yellow Trail	0.3 miles
	Connector Trail	0.5 miles to Amy's Park
	Scenic Lookout	
	Parking Lot/Trailhead	

PRESERVE USE GUIDELINES

- Please hike only on the marked trails.
- Please be courteous of other guests at the preserve.
- No unauthorized removal of plants or animals. Hunting is allowed with LGLC permit. Please contact LGLC for permit application.
- No motorized or non-motorized recreational vehicles of any kind allowed on the preserve.
- Please keep dogs leashed at all times.
- No camping or fires. Please do not litter.
- Parking lot may not be open in winter; check with office